

M O O N R A K E R

Type 23B/3

Higher power capability base mounted marine HF whip antenna for large vessels over 18 metres (60 feet)

The type 23B/3 is a 7 metre (23 ft) heavy duty self supporting whip antenna with a power capability of 1.2 kW PEP in the frequency range 1.6 to 30 MHz. It is designed to provide efficient and reliable communications for professional ocean going vessels, where higher power and environmental capability is required.

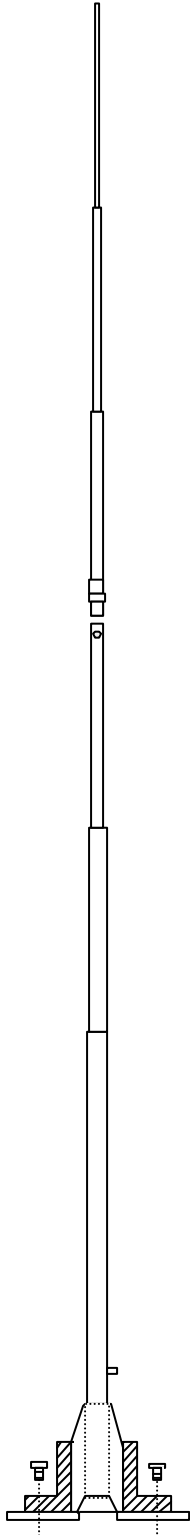
The 23B/3 is base mounted and designed to withstand constant wind speeds up to 250 km/h (156 mph) without permanent deformation effects. Construction is of heavy gauge marine grade aluminium alloy tubing to give a large low loss surface area for maximum radiating efficiency, fully protected by a high durability epoxy based coating resistant to chemical attack, abrasion and the effects of ozone and ultra-violet radiation. Standard colour is white (other colours to order). The base insulator is ribbed low loss polypropylene with stainless steel connection. A low loss loading coil 2.75 m (9 ft) from the top is available as an option.

For ease of transport, the antenna breaks down into two sections [base 3.76m (12.3 ft); top 3.35m (11 ft)] which slip together and fasten with four stainless steel locking screws.

The 23B/3 is available unloaded or resonant at a single frequency of 4.6 MHz. For operation on frequencies other than the resonant frequency, the difference is made up in the antenna tuning unit.

Specifications

HF Marine Band	1.6-30 MHz
Length	7.0 metres (23 ft)
Pattern	Omnidirectional
Polarisation	Vertical
Frequency Range	Pretuned to 4.6 MHz or, unloaded, 1.6-30 MHz with suitable ATU
Wind Loading	8.8 kg at 100 km/h (19.5 lbs at 60 mph) 20 kg at 150 km/h (44 lbs at 94 mph) Antenna survival : 250 km/h (156 mph)
Power Capability	1.2 kW PEP for unloaded top sections, 800 w PEP for 4.6 MHz top sections
Base Insulator	>25 kV insulator flash over voltage (test conditions: antenna dry)
Radiator	Total radiating surface: 5,500 sq cm (5.9 sq ft)
Mountings	Cast aluminium alloy base flange and support tube with integral base insulator and O ring
Base Mount Finish	Epoxy based enamel
Connection	1/4 in Whitworth stainless steel stud and lock nuts direct to antenna
Packed Weight	9kg (19.8 lbs) Antenna and base unpacked 7 kg (15.4 lbs)



Specifications subject to change 10/09

Moonraker Australia Pty. Ltd. A.C.N. 009 531 211

Tasmania Technopark, Dowsing Point 7010, Tasmania Australia

Telephone 61 (0)3 6273 1533 Fax: 61 (0)3 6273 1749 Email: radiocom@moonraker.com.au